

Rulestream software for Engineer-to-Order

Benefits

- Increased accuracy
- Greater throughput
- Shorter lead times
- Higher sales win rates
- Better margin security
- Greater scalability
- Better retention of product knowledge

Features

- Central repository for ETO product knowledge that is easy to use with rule configuration management, reporting and analytics
- Flexible deployment options with Web client, Rich client, and offline client
- Comprehensive integrations for CAD, PLM, ERP, CRM and Microsoft Office
- Enterprise scalability

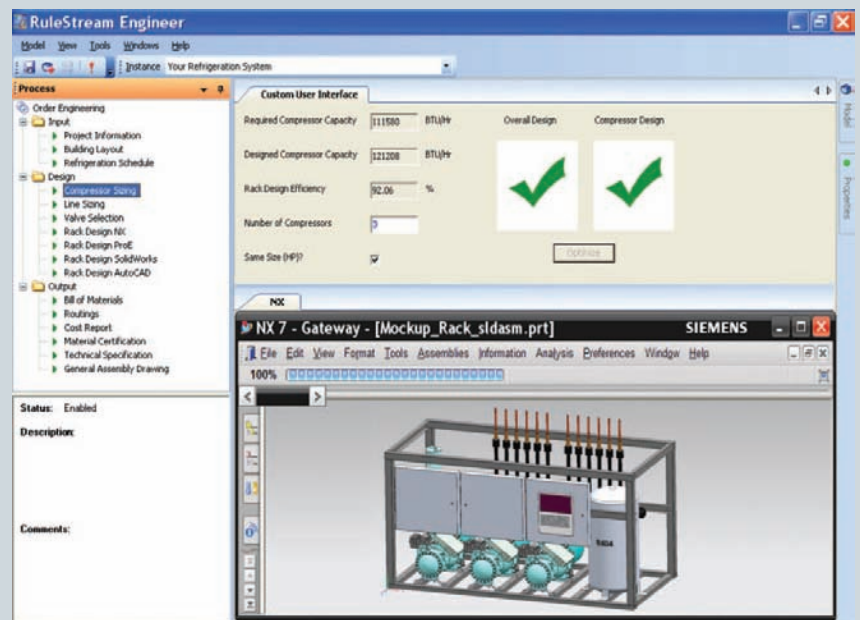
Once the functional product requirements have been entered, Rulestream allows engineering work products (BOMs, CAD models, etc.) to be automatically generated according to design and manufacturing rules.

Summary

Developing products to meet specific customer needs is a growing challenge for manufacturers. The Rulestream® software for Engineer-to-Order helps meet that challenge by allowing companies to rapidly engineer products to exact customer specification, thereby achieving dramatic improvements to critical sales and order engineering processes.

Comprehensive solutions for engineer-to-order (ETO) process automation

Competition and rapidly changing customer requirements make it increasingly necessary for ETO manufacturers to find better, more efficient ways to tailor products to customer-unique specifications. Rulestream Engineer-to-Order addresses these challenges with a comprehensive solution spanning sales, engineering and manufacturing. By capturing ETO process knowledge and using it to automate key business processes across the enterprise, companies using Rulestream have increased sales win rates while shortening lead times and reducing overall costs. This ability to simultaneously increase revenues and lower operating expenses makes Rulestream a compelling solution for the increasingly competitive ETO market.



PLM COMPONENTS

Rulestream software for Engineer-to-Order

Rulestream continuous improvement loop

The Rulestream solution establishes a continuous improvement loop for engineering standards and product knowledge in order keep ETO systems in step with the ever changing business environment. As such, Rulestream supports Six Sigma and lean principles and provides an effective vehicle for institutionalizing the solutions that result from such quality initiatives.

Define Capture new or refine existing product knowledge and standards

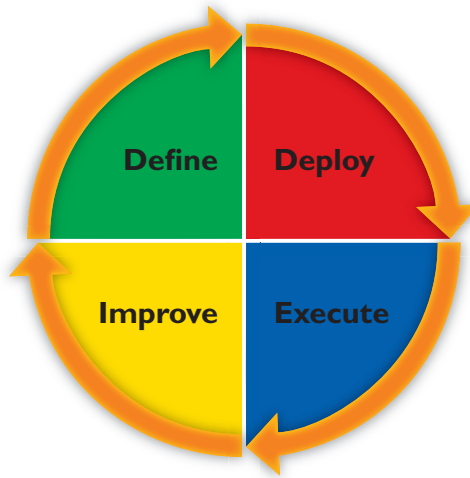
Deploy Deploy standards to sales and engineering for immediate or future use

Execute Execute standards in support of key sales and order engineering deliverables

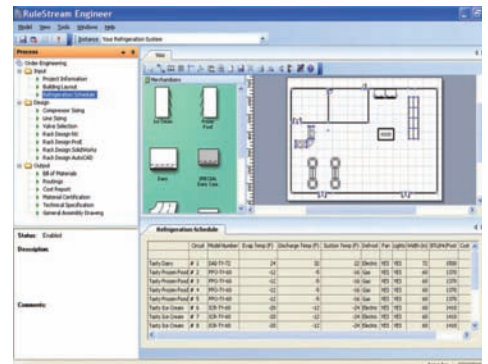
Improve Measure quality of standards and synthesize lessons learned

Key Rulestream capabilities for ETO

- Single, enterprise-wide repository for engineering standards and product knowledge
- Enterprise-class architecture that can scale in terms of users, geography, products and rules



- Rich, easy-to-use authoring environment for expressing many different types of product rules, such as functional engineering, design, cost estimating, pricing and process planning
- Deep, bi-directional integrations to CAD, allowing new assemblies and components to be dynamically generated according to your design rules
- Bi-directional interfaces to PLM and ERP
- Tight integrations to 2D schematic tools (such as Microsoft Corporation's Visio® software) that allow users to graphically express a logical or physical layout that automatically drives downstream deliverables such as 3D CAD and bills of material
- Integration with Microsoft Office® software
- Ability to establish quality metrics for engineering standards and product rules, so your organization can easily understand how effectively those assets are being applied in day-to-day operations, and use that information for continuous improvement



Rulestream allows functional and physical layout requirements to be expressed through 2D schematic builders such as Microsoft Visio.

Rulestream delivers important business benefits including:

Sales quotation

- Increased bid rate
- Increased win rate
- Margin security

Order engineering

- Shorter lead times
- Increased productivity
- Fewer errors

Order manufacturing

- Fewer work stoppages
- Greater asset utilization
- More throughput

Rulestream provides rules-based generation of key sales and order engineering deliverables according to engineering and manufacturing constraints. It integrates with both engineering authoring tools and enterprise business systems (including CAD, PLM, CRM and ERP) in order to rapidly generate ETO process deliverables and deposit them in the appropriate system of record.

Rulestream ETO capabilities

Sales quotation

- Pricing/costing
- Proposals
- 3D visualization
- Sales drawings

Order engineering

- 3D models
- Manufacturing drawings
- Engineering BOM
- Verification reports

Order manufacturing

- Manufacturing BOM
- Routings
- Work instructions
- Test procedures

Rulestream solutions apply to:



Power generation and distribution.



Heavy machinery and equipment.



HVAC, pumps and valves.



Furniture and caseworks.



Industrial products and systems.

Industry success

Companies using the Rulestream solution represent a wide range of industries including power generation, fluid flow technologies, oil and gas, HVAC&R, machinery, aerospace and furniture, among others.

Siemens PLM Software offers a comprehensive set of services in connection with Rulestream software to help you reach your implementation goals on time and within budget. A strong emphasis is placed on helping your project team become proficient in the use of Rulestream software, so that your organization can be in complete control of capturing and managing the rules that drive your ETO process. Available services include product training, project management, solution architecture, best practice coaching, rule model development, and software system integration.

Contact
Siemens Industry Software
Americas 1 800 498 5351
Europe +44 (0) 1276 702000
Asia-Pacific 852 2230 3333

www.siemens.com/plmcomponents

© 2011 Siemens Product Lifecycle Management Software Inc. All rights reserved. Siemens and the Siemens logo are registered trademarks of Siemens AG. Rulestream is a trademark or registered trademark of Siemens Product Lifecycle Management Software Inc. or its subsidiaries in the United States and in other countries. Microsoft Office and Visio are trademarks or registered trademarks of Microsoft Corporation. All other logos, trademarks, registered trademarks or service marks used herein are the property of their respective holders.
X17 19129 6/11 B